



VDM Coffee with



# the Principal for October

Wednesday, October 15, 2020 9 am

---

# Irene Herrera-Cevallos

Welcome from the Principal

(619) 453-9125

[irene.herrera-cevallos.sysdschool.org](mailto:irene.herrera-cevallos.sysdschool.org)





**UCSF** Medical  
Education  
School of Medicine

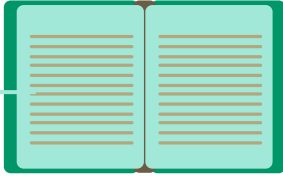
Berkeley **UCSF**  
Joint Medical Program

# Agenda

- Welcome
- Mission and Vision Statement
- VDM Office Hours & Website
- Attendance
- COVID Safety and Preparation for Blended Learning
- Ways to become involved
- Coffee with the Principal Future Topics



# Our Mission and Vision



## Mission

Vista Del Mar Middle School provides students the opportunity to achieve, contribute, and strive for excellence



## Vision

The vision of Vista Del Mar Middle School is to ensure a safe, supportive environment so that all students can reach their full potential. We are committed to providing a rigorous standards-based instructional program that engages students and prepares them to be successful in the path for college and career readiness for the 21st century.

# School Office Hours

Monday thru Thursday

- 8 am to 2:00 pm

Friday

- 8 am to 12 noon

Closed to the Public:

**VISITS BY APPOINTMENT ONLY**



# School Website

1.



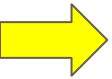
The screenshot shows a dark blue header with two dropdown menus: "Our Schools" and "Translate". Below the header is a light gray sidebar menu with a scroll bar. The menu items are: "Preschool and Child Development Program", "La Mirada Elementary", "Ocean View Hills Elementary", "Smythe Elementary", "Sunset Elementary", "Vista Del Mar Middle", "Willow Elementary", and "San Ysidro Middle School". A yellow arrow points to "Vista Del Mar Middle". The main content area behind the sidebar shows the "San Ysidro District" logo with "EST - 1887" and the motto "AND OPPORTUNITY FOR ALL STUDENTS TO SUCCEED". Below the logo, there is a blue bar with "BOARD OF EDUCATION" and "ADM", and a blue banner with the text "Messa" and "From t".

2.

VDM Website

# Attendance Data

|                            | THU           | FRI           | SAT            | SUN            | MON           | TUE           | WED           | THU           | FRI           | SAT            | MON           | TUE           | WED           | THU            |
|----------------------------|---------------|---------------|----------------|----------------|---------------|---------------|---------------|---------------|---------------|----------------|---------------|---------------|---------------|----------------|
| October, 2020              | 1             | 2             | 3              | 4              | 5             | 6             | 7             | 8             | 9             | 10             | 12            | 13            | 14            | 15             |
| La Mirada                  | 94.37%        | 90.00%        |                |                | 90.62%        | 93.75%        | 91.87%        | 91.87%        | 90.00%        |                | 91.87%        | 94.37%        | 91.35%        |                |
| Ocean View Hills           | 96.76%        | 94.02%        |                |                | 94.73%        | 95.34%        | 96.35%        | 96.55%        | 94.12%        |                | 93.10%        | 96.95%        | 96.95%        |                |
| Smythe                     | 93.30%        | 87.85%        |                |                | 90.34%        | 91.14%        | 91.14%        | 91.75%        | 90.51%        |                | 93.62%        | 91.62%        | 93.95%        |                |
| Sunset                     | 95.93%        | 92.55%        |                |                | 91.05%        | 95.27%        | 95.81%        | 96.31%        | 92.79%        |                | 93.29%        | 96.31%        | 95.81%        |                |
| SYMS                       | 96.36%        | 93.23%        |                |                | 92.39%        | 94.85%        | 93.82%        | 95.70%        | 91.23%        |                | 96.36%        | 95.20%        | 94.21%        |                |
| Vista Del Mar              | 98.35%        | 93.88%        |                |                | 97.17%        | 97.17%        | 97.88%        | 98.58%        | 95.05%        |                | 95.52%        | 96.46%        | 97.88%        |                |
| Willow                     | 94.74%        | 92.58%        |                |                | 90.96%        | 92.87%        | 92.60%        | 94.35%        | 92.19%        |                | 91.78%        | 94.21%        | 94.09%        |                |
| <b>District daily ave.</b> | <b>95.69%</b> | <b>92.02%</b> | <b>#DIV/0!</b> | <b>#DIV/0!</b> | <b>92.47%</b> | <b>94.34%</b> | <b>94.21%</b> | <b>95.02%</b> | <b>92.27%</b> | <b>#DIV/0!</b> | <b>93.65%</b> | <b>95.02%</b> | <b>94.89%</b> | <b>#DIV/0!</b> |





# Advisory Attendance Incentive

Random Drawing each Monday from a list of last week's students with no absences the previous week.

## Congratulations!

Jayden S.  
Carlos Q.  
Nicole R.  
Caitlyn S.



# BIG 4 COVID SAFETY MEASURES

**Temperature &  
Symptom Screenings**

1

**Face Coverings**

3

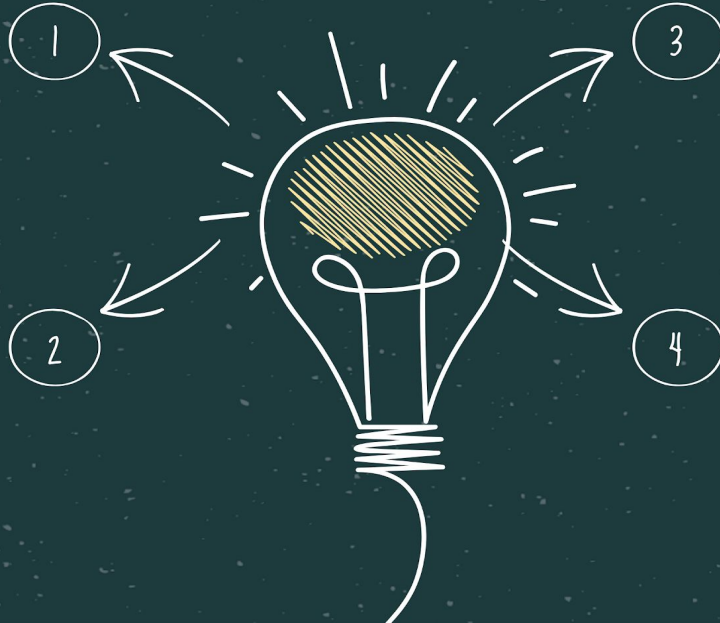
**Physical Distancing**

*"6 Foot Social  
Distancing"*

2

**Hand Washing &  
Increased Sanitation**

4



# VDM's Covid Safety Plan

## VDM Website

VDM COVID-19 Prevention Plan for Schools: [VDM COVID-19 Prevention Plan](#)

Plan de prevención de COVID-19: [Plan de prevención en español](#)

## NOTICE

**IN RESPONSE TO COVID-19, PLEASE ADHERE TO OUR NEW POLICY.**

1. Wear face coverings  
(As required by state and county health guidelines for schools)
2. Maintain social distancing of six feet
3. Wash hands frequently
4. Do NOT enter school areas if you have any COVID-19 related symptoms  
(fever, cough, chills, sore throat, runny nose, nausea, difficulty breathing, fatigue, headache, body ache, diarrhea or loss of taste or smell)

## AVISO

**EN RESPUESTA A LA COVID-19, FAVOR DE ADHERIRSE A NUESTRA NUEVA POLÍTICA.**

1. Use cubiertas en la cara (Como lo requieren las lineamientos de salud estatales y del condado para las escuelas)
2. Mantenga un distanciamiento social de seis pies
3. Lávese las manos frecuentemente
4. NO entre a las instalaciones escolares si tiene cualquiera de los síntomas relacionados a la COVID-19 (Fiebre, tos, resaca, gorgoteo, náusea, dificultad al respirar, fatiga, dolor de cabeza, dolor de cuerpo o cuerpo curado, diarrea o pérdida del gusto o al olfato)

ADMINISTRATION  
116



## NOTICE


**NUMBER OF VISITORS ALLOWED INSIDE THE SCHOOL IS BEING LIMITED UNTIL FURTHER NOTICE**

## AVISO


**EL NÚMERO DE VISITANTES PERMITIDOS ADENTRO DE LA ESCUELA ESTÁ SIENDO LIMITADO HASTA NUEVO AVISO**

### CORONAVIRUS ALERT


**PLEASE DO NOT ENTER SCHOOL IF YOU ARE SHOWING ANY OF THE SYMPTOMS BELOW**



**FEVER**



**COUGH**



**SHORTNESS OF BREATH**

OR AT LEAST TWO OF THESE SYMPTOMS:  
 • CHILLS • SHAKING • MUSCLE PAIN • HEADACHE  
 • SORE THROAT • NEW LOSS OF TASTE OR SMELL

All Temperatures Must Be Checked Before Entering Location



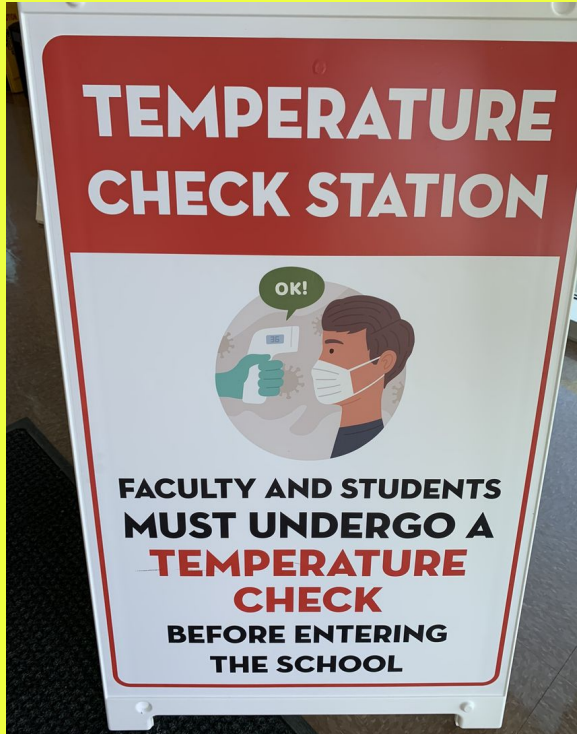

**ANNUAL NOTIFICATION PACKETS DROP OFF**

🙏 Thank You

From The San Marcos School District  
 800-242-2671, Fax: 760-326-2120  
 The following information is for general informational purposes only and is not intended to constitute an offer of insurance or any other financial product. For more information, please contact your insurance agent or broker.  
 Contact Us: 760-326-2120  
 Website: www.sanmarcos.k12.ca.us  
 Copyright © 2020 San Marcos School District. All rights reserved.

From The San Marcos School District  
 Please write the Student's Name on the Envelope  
 Thank you  
 Favor de escribir el nombre del alumno en el sobre  
 Gracias

FACULTY MUST CHECK TEMPERATURES BEFORE ENTERING THE SCHOOL





Signkinds  
DISTRIBUTION  
1-800-772-3333

# NEW CORONAVIRUS

Covid-19 or 2019-nCov



## WHAT IS IT?

Coronavirus disease (COVID-19) is an infectious disease caused by a newly discovered coronavirus. Most people infected with the COVID-19 virus will experience mild to moderate respiratory illness and recover without requiring special treatment. Older people, and those with underlying medical problems like cardiovascular disease, diabetes, chronic respiratory disease, and cancer are more likely to develop serious illness.

## PREVENTION

- Stay at home when you are sick.
- Avoid close contact with people who are sick.
- Wash your hands for at least 20 seconds.
- Cover your cough or sneeze with a tissue.
- Don't eat raw food, thoroughly cook meats and eggs.
- Avoid touching eyes, hands and mouth with unclean hands.
- Clean and disinfect frequently touched objects and surfaces.
- Avoid Crowded Places.

## SYMPTOMS

Common Less typical



## INCUBATION

The incubation period for COVID-19, which is the time between exposure to the virus (becoming infected) and symptom onset, is on average 5-6 days, however can be up to 14 days. During this period, also known as the "pre-symptomatic" period, some infected persons can be contagious. Therefore, transmission from a pre-symptomatic case can occur before symptom onset.











# Get Involved

- Coffee with the Principal, Monthly

- October 15th, 9 am
- November 10th, 6 pm

- Attend a School Site Council Meeting (SSC)

- September 24th, 2:15 pm
- October 22nd, 2:15 pm
- December 3rd, 2:15 pm

- Attend an English Language Advisory Committee (ELAC)

- Meetings TBD



# Future Coffee with the Principal Topics ??????



Thank you for  
attending!



**Go Sharks!**